



SPLUNK FOR HEALTHCARE

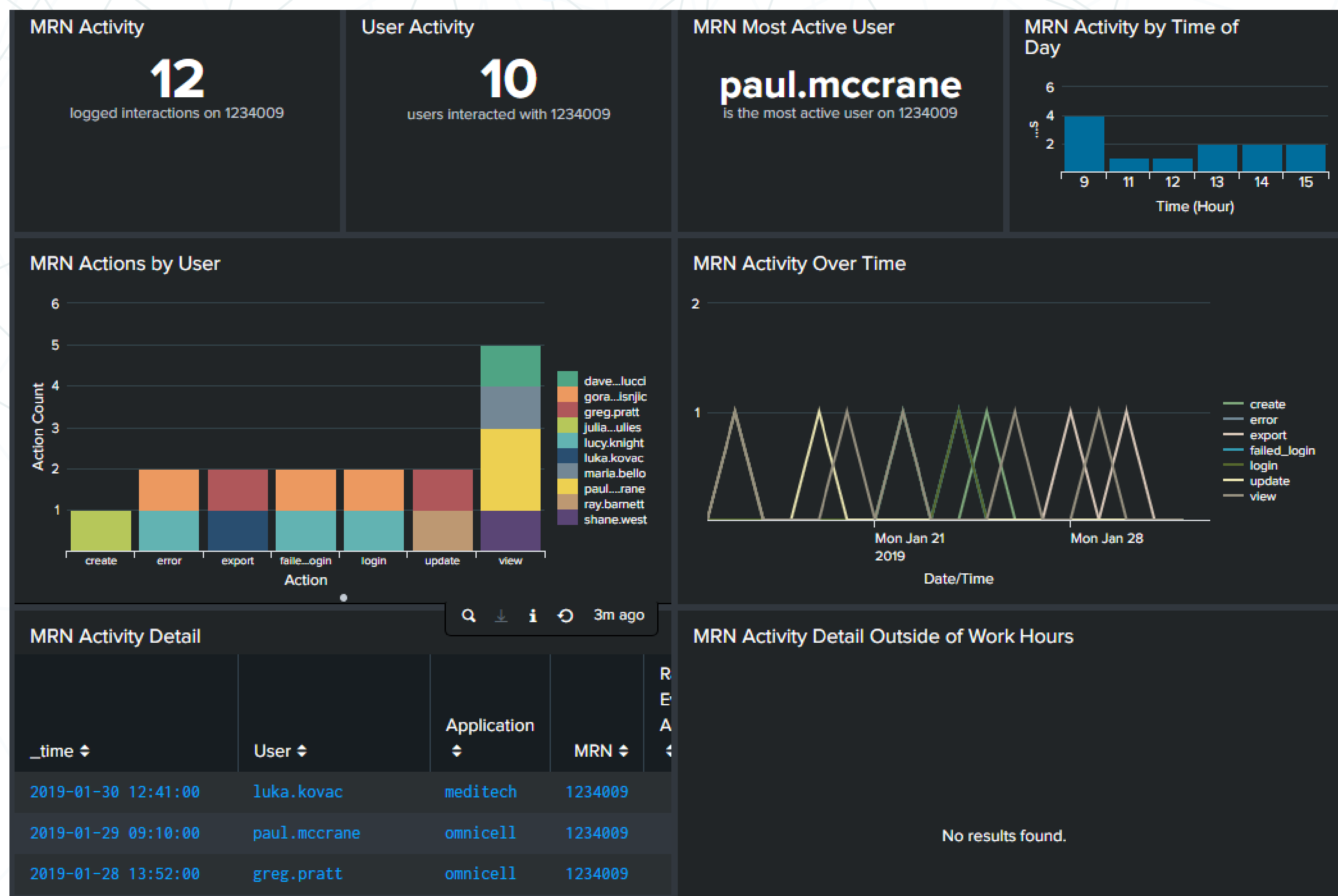
How bitsIO Helped Large Healthcare Organizations Achieve Service Excellence and Optimize Workflows

Healthcare organizations face a dynamic landscape filled with evolving regulations, rapidly changing technology, and the need to optimize patient care while safeguarding sensitive data. To stay ahead of these challenges, real-time data analysis, secure information exchange, and proactive anomaly detection are of utmost importance. Healthcare providers must evolve to meet these demands. A robust solution is required to effectively monitor, analyze, and act upon the myriad of real-time data sources within healthcare environments.

bitsIO, an expert in Splunk solutions, helped healthcare organizations adopt Splunk as their trusted data platform.

Splunk's capabilities extend beyond traditional data analytics:

- **Splunk enables healthcare professionals** to access, analyze, and visualize machine data from any source, on-premises or in the cloud. This real-time insight helps them make informed decisions quickly.
- **Splunk proactively identifies and responds** to potential security breaches in real-time, safeguarding the privacy of patient information and ensuring compliance with data protection regulations.
- **Splunk simplifies the complexity of healthcare compliance**, allowing organizations to address regulatory requirements efficiently. The feedback mechanisms enhance security and workflow processes.
- **Splunk's fraud detection capabilities** scan extensive datasets to monitor patterns, utilizing internal and external knowledge bases, historical profiles, and caregiver data.



bitsIO, worked closely with healthcare organizations to implement Splunk effectively. The implementation process included defining roles, responsibilities, and timelines. The transition was seamless, ensuring minimal disruption to daily operations.

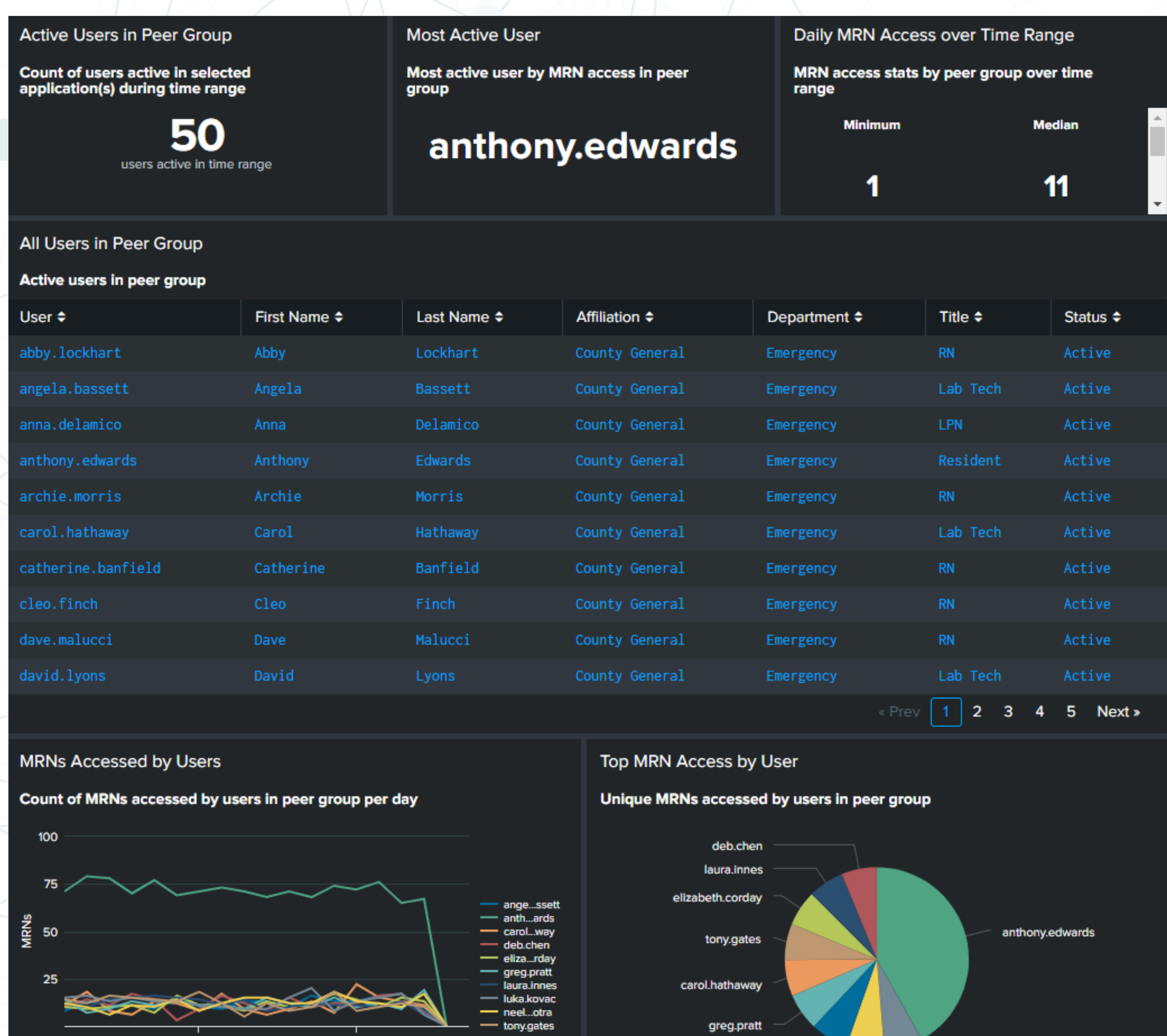
22:00:00 ... 2019-01-31 22:00:00 - Detailed User Activity (normalized format):

	PATIENT_ID	ACTION	APPLICATION
01-31 16:52:00	1234669	export	imagecast
01-31 15:35:00	1234625	delete	meditech
01-31 14:46:00	1234267	cabinet_access	omnicell
01-31 12:24:00	1234612	view	meditech
01-31 12:06:00	1234270	export	ormanager
01-31 12:00:00	1234487	edit	athena
01-31 11:45:00	1234059	view	meditech
01-31 10:51:00	1234670	failed_login	arms
01-31 09:32:00	1234153	delete	arms
01-31 08:45:00	1234395	failed_login	epic
01-31 08:22:00	1234649	create	cerner
01-30 16:54:00	1234345	cabinet_access	omnicell
01-30 16:15:00	1234396	edit	epic
01-30 15:24:00	1234857	failed_login	ormanager
01-30 15:00:00	1234050	view	arms

< Prev 1 2 3 4 5 6 7 8 9 10

The Result: The impact of Splunk adoption in healthcare has been transformative.

- Real-time data exchanges and anomaly detection ensure clinicians make decisions based on the most up-to-date information, resulting in enhanced patient care and faster recovery.
- Splunk's proactive approach to security incident identification and response has successfully protected patient data, enhancing trust and compliance.
- Compliance requirements are easily met thanks to Splunk's streamlined processes and the ability to gather feedback for continuous improvement.
- Healthcare organizations now have a powerful tool to detect and prevent fraudulent activities, saving valuable resources and reputation.





The adoption of Splunk in healthcare has ushered in a new era of data-driven decision-making. bitsIO, has played a pivotal role in guiding healthcare providers toward realizing the full potential of Splunk. This case study exemplifies the tangible benefits of Splunk's real-time insights, security enhancements, compliance simplification, and fraud prevention. As healthcare organizations continue to navigate the complexities of their industry, Splunk remains a trusted partner in ensuring data-driven excellence. The journey to better patient care, fortified security, and operational efficiency is marked by Splunk's cutting-edge technology.

About bitsIO

bitsIO is your trusted partner for deploying, customizing, and managing the robust Splunk data platform, enabling you to benefit from real-time data insights. bitsIO is a three-time recipient of the prestigious Splunk Partner of the Year award and the coveted 2023 Global Social Impact Partner of the Year by Splunk. bitsIOboasts over two decades of IT domain expertise. We have a proven track record of successful Splunk deployments, serving organizations of all sizes worldwide.

Book a Consultation

Contact bitsIO today to discover how we can tailor Splunk's capabilities to your unique healthcare needs. Experience the transformation in patient care, security, compliance, and operational efficiency that Splunk brings to the table.

Contact details



info@bitsioinc.com



866-624-8746